

---

*Mini POE Ethernet to  
RS-232 Converters* **CE**

Models: PES1A, PESV1A



**B&B electronics**  
MANUFACTURING COMPANY

---

Manual Documentation Number: PES1A/PESV1A-2907m    pn# 6868-rev002  
B&B Electronics Mfg Co Inc - 707 Dayton Rd - PO Box 1040 - Ottawa IL 61350 - Ph 815-433-5100 - Fax 815-433-5104 - [www.bb-elec.com](http://www.bb-elec.com)  
B&B Electronics Ltd - Westlink Commercial Park - Oranmore, Galway, Ireland - Ph +353 91-792444 - Fax +353 91-792445 - [www.bb-europe.com](http://www.bb-europe.com)



---

Manual Documentation Number: PES1A/PESV1A-2907m

B&B Electronics Mfg Co Inc – 707 Dayton Rd - PO Box 1040 - Ottawa IL 61350 - Ph 815-433-5100 - Fax 815-433-5104 – [www.bb-elec.com](http://www.bb-elec.com)  
B&B Electronics Ltd – Westlink Commercial Park – Oranmore, Galway, Ireland – Ph +353 91-792444 – Fax +353 91-792445 – [www.bb-europe.com](http://www.bb-europe.com)



**International Headquarters**

B&B Electronics Mfg. Co. Inc.  
707 Dayton Road  
Ottawa, IL 61350 USA

**Phone** (815) 433-5100 -- **General Fax** (815) 433-5105

Website: [www.bb-elec.com](http://www.bb-elec.com)

**Sales e-mail:** [orders@bb-elec.com](mailto:orders@bb-elec.com) -- **Fax** (815) 433-5109

**Technical Support e-mail:** [support@bb.elec.com](mailto:support@bb.elec.com) -- **Fax** (815) 433-5104

**European Headquarters**

B&B Electronics Ltd.  
Westlink Commercial Park  
Oranmore, Co. Galway, Ireland

**Phone** +353 91-792444 -- **Fax** +353 91-792445

Website: [www.bb-europe.com](http://www.bb-europe.com)

**Sales e-mail:** [sales@bb-europe.com](mailto:sales@bb-europe.com)

**Technical Support e-mail:** [support@bb-europe.com](mailto:support@bb-europe.com)

© B&B Electronics – November 2005



---

© 2005 B&B Electronics. No part of this publication may be reproduced or transmitted in any form or by any means, electronic or mechanical, including photography, recording, or any information storage and retrieval system without written consent. Information in this manual is subject to change without notice, and does not represent a commitment on the part of B&B Electronics.

B&B Electronics shall not be liable for incidental or consequential damages resulting from the furnishing, performance, or use of this manual.

All brand names used in this manual are the registered trademarks of their respective owners. The use of trademarks or other designations in this publication is for reference purposes only and does not constitute an endorsement by the trademark holder.

---

Manual Documentation Number: PES1A/PESV1A-2907m

B&B Electronics Mfg Co Inc - 707 Dayton Rd - PO Box 1040 - Ottawa IL 61350 - Ph 815-433-5100 - Fax 815-433-5104 - [www.bb-elec.com](http://www.bb-elec.com)  
B&B Electronics Ltd - Westlink Commercial Park - Oranmore, Galway, Ireland - Ph +353 91-792444 - Fax +353 91-792445 - [www.bb-europe.com](http://www.bb-europe.com)



---

# Table of Contents

---

<b>CHAPTER 1: INTRODUCTION.....</b>	<b>1</b>
FEATURES.....	1
COMMUNICATION MODES .....	2
<i>Direct IP</i> .....	2
<i>Virtual COM Port</i> .....	2
<i>Paired Mode</i> .....	3
<i>Other Communications Modes</i> .....	3
<b>CHAPTER 2: HARDWARE OVERVIEW .....</b>	<b>5</b>
PACKAGE CHECKLIST .....	5
INDICATORS, SWITCHES AND CONNECTORS.....	6
<i>Link Integrity LED (Yellow)</i> .....	6
<i>Network Activity LED</i> .....	6
<i>Reset Switch</i> .....	6
<i>Voltage Output Selector Switch (PESVIA only)</i> .....	6
<i>Ethernet Port Connector</i> .....	7
<i>Serial Port Connector</i> .....	7
<i>Power Connector</i> .....	7
<i>Output Power Connector (PESVIA only)</i> .....	7
CONNECTING THE HARDWARE .....	8
<i>Power over Ethernet (PoE)</i> .....	8
<i>Configuration Connections</i> .....	9
<b>CHAPTER 3: GETTING STARTED .....</b>	<b>11</b>
1. <i>Check the contents of your PES1A/PESVIA package. It should contain...</i>	11
2. <i>Set up the Hardware</i> .....	11
3. <i>Power it Up</i> .....	11
4. <i>Get the IP Address</i> .....	11
5. <i>Login</i> .....	11
6. <i>Configure the PES1A/PESVIA</i> .....	12
7. <i>Set up VCOM (if using the RealPort profile)</i> .....	12
8. <i>Communicate</i> .....	12
<b>CHAPTER 4: CONFIGURING THE IP ADDRESS.....</b>	<b>13</b>
USING THE DISCOVERY SOFTWARE .....	13

---

<b>CHAPTER 5: USING THE WEB CONFIGURATION AND MANAGEMENT INTERFACE.....</b>	<b>15</b>
LOGGING IN.....	15
LOGGING OUT .....	15
USING TUTORIAL AND HELP.....	16
CONFIGURING NETWORK SETTINGS .....	16
<i>IP Settings</i> .....	17
<i>Network Services Settings</i> .....	17
<i>Advanced Network Settings</i> .....	18
CONFIGURING THE SERIAL PORT .....	18
<i>Port Profile Settings</i> .....	18
<i>Basic Serial Settings</i> .....	23
<i>Advanced Serial Settings</i> .....	24
CONFIGURING ALARMS AND NOTIFICATION.....	24
<i>Alarm Notification Settings</i> .....	24
<i>Alarm Conditions</i> .....	24
<i>Alarm Destinations</i> .....	25
<b>CHAPTER 6: MANAGING THE PES1A/PESV1A .....</b>	<b>27</b>
SYSTEM SETTINGS .....	27
<i>Device Identity Settings</i> .....	27
<i>Simple Network Management Protocol (SNMP) Settings</i> .....	27
USING REMOTE MANAGEMENT .....	27
MANAGING USERS AND PERMISSIONS .....	27
<i>Changing the Root Username and Password</i> .....	28
<i>Adding New Users</i> .....	28
<i>Configuring User Access and Permissions</i> .....	28
MANAGING SERIAL PORTS AND CONNECTIONS .....	29
<i>Serial Ports</i> .....	29
<i>Connections</i> .....	29
<b>CHAPTER 7: USING ADMINISTRATIVE FEATURES .....</b>	<b>31</b>
FILE MANAGEMENT.....	31
BACKUP/RESTORE .....	31
UPDATE FIRMWARE.....	31
FACTORY DEFAULT SETTINGS .....	31
SYSTEM INFORMATION .....	32
<i>General</i> .....	32
<i>GPIO</i> .....	32
<i>Serial</i> .....	32
<i>Network</i> .....	33
REBOOT .....	34

---



---

<b>CHAPTER 8: USING REALPORT .....</b>	<b>35</b>
<i>Configuring the IP Address.....</i>	<i>35</i>
<i>Configuring the Serial Port for RealPort.....</i>	<i>35</i>
<i>Adding a Virtual COM Port using RealPort.....</i>	<i>36</i>
<i>Removing a Virtual COM Port using RealPort .....</i>	<i>36</i>
<i>Updating RealPort.....</i>	<i>37</i>
<b>APPENDIX A: DEFAULT CONFIGURATION SETTINGS .....</b>	<b>39</b>
<b>APPENDIX B: PRODUCT SPECIFICATIONS .....</b>	<b>41</b>
<b>APPENDIX C: DIMENSIONAL DIAGRAMS.....</b>	<b>43</b>
<b>APPENDIX D: RS-232 CONNECTIONS.....</b>	<b>45</b>
<b>APPENDIX E: NETWORK CONNECTIONS .....</b>	<b>47</b>
<b>APPENDIX F: POWER OVER ETHERNET (POE).....</b>	<b>49</b>



---

# Chapter 1: Introduction

---

**PES1A and PESV1A Mini PoE (Power over Ethernet) Ethernet to RS-232 Converters** provide simple and cost-effective solutions for connecting RS-232 devices to Ethernet networks. PES1A and PESV1A converters make it easy to connect serial printers, copiers, building automation, retail, point of sale, warehousing and banking equipment directly into Ethernet networks. Both models feature Power over Ethernet (PoE) operation and the PESV1A provides a switch selectable voltage output to power external devices.

PES1A and PESV1A converters support **virtual COM port, console management, TCP and UDP socket, serial bridge, terminal, modem emulation and custom connections**. Network addresses can be obtained dynamically or manually. Simple Network Management Protocol (SNMP) is supported. Configuration is accomplished through a web-based user interface.



Figure 1. PES1A Mini POE Ethernet to RS-232 Converter

## Features

- Converts Ethernet to RS-232 serial
- Small, economical and configurable
- PESV1A provides selectable output power supply
- Supports TD, RD, TRS, CTS, DTR, DCD, DSR and GND RS-232 lines
- LEDs indicate link integrity and data transfer activity

- 10/100 Mbps auto-detecting operation
- IEEE 802.3af (Power over Ethernet) compatible
- Web Configuration and Management user interface
- Email event notification

## Communication Modes

**PES1A/PESV1A Ethernet to RS-232 converters** allow you to connect serial devices over a LAN or WAN. Serial devices no longer are limited to a physical connection to the PC COM port. They can be installed anywhere on the LAN using TCP/IP or UDP/IP communications. This allows traditional Windows PC software access to serial devices anywhere on the LAN/WAN network.

### **Direct IP**

**Direct IP Mode** allows applications using TCP/IP or UDP/IP socket programs to communicate with the asynchronous serial ports on the serial server. In this mode the PES1A/PESV1A is configured as a TCP or UDP server. The socket program running on the PC establishes a communication connection. The data is sent directly to and from the serial port on the server.

**TCP Server Mode** allows network devices to initiate a TCP connection to the serial device connected to the serial port on the PES1A/PESV1A. This is also referred to as reverse telnet.

**UDP Server Mode** allows network devices to initiate a UDP connection to the serial device attached to the serial port of the PES1A/PESV1A. When using UDP protocol the PES1A/PESV1A can be configured to broadcast data to and receive data from multiple IP addresses.

### **Virtual COM Port**

**Virtual COM Port** mode (also called RealPort, or com port redirection) allows you to map a COM port on your PC to the serial port on your PES1A/PESV1A. Using the RealPort software (included with the PES1A/PESV1A) you create virtual COM ports on your PC. When your application sends data to this port, RealPort redirects the data across the network to serial device connected to the PES1A/PESV1A serial port. The network is transparent to the user application and the serial device connected to the PES1A/PESV1A.

---

## Paired Mode

**Paired Mode** (also called **Serial Tunneling** or **Serial Bridge** mode) allows serial devices connected to two PES1A/PESV1A converters to communicate across a network. The two PES1A/PESV1A converters automatically connect to each other.

In Paired Mode the **heartbeat feature** ensures reliable communications by restoring the connection if communications are temporarily lost at either end due to loss of power or Ethernet connection.

## Other Communications Modes

PES1A/PESV1A Converters also feature the following communications profiles:

**Terminal Mode** allows you to connect a PC running terminal software to the PES1A/PESV1A serial port and communicate with the PES1A/PESV1A via a command line interface.

**Modem Emulation Mode** allows you to configure the serial port to operate as if it is a modem. For legacy applications where a serial device is set up to communicate through a modem, the serial device can now be connected to the PES1A/PESV1A and communication occurs over the network. The PES1A/PESV1A emulates modem responses to and from the serial device.

In **Console Management Mode** the PES1A/PESV1A can be configured for connection to the management port typically found on network devices such as routers, switches and servers. This allows remote management of the network device. Communication can be accomplished using telnet to a specific port in the converter.

**Custom Mode** allows you to custom configure the PES1A/PESV1A serial port and is used if your application does not fit into any other predefined modes.



## Chapter 2: Hardware Overview

### Package Checklist

**PES1A/PESV1A PoE Ethernet to RS-232 Converters** are shipped with the following items included:

- ✓ The PES1A or PESV1A module
- ✓ A printed version of this user manual
- ✓ A printed version of the PES1A/PESV1A Quick Start Guide
- ✓ CD-ROM disc with
  - B&B discovery software
  - RealPort drivers for Windows 98/ME/2000/XP/NT 4.0/Vista
  - this manual in pdf format
  - a Quick Start guide in pdf format



Figure 2. Top View of the PES1A Converter

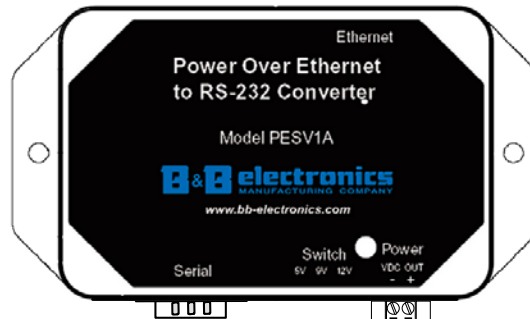


Figure 3. Top View of the PESV1A Converter

# Indicators, Switches and Connectors

## Link Integrity LED (Yellow)

When the **yellow LED** located on the Ethernet jack is illuminated it indicates that a connection (link integrity) has been established between the converter and a node on the network.

## Network Activity LED

When the **green LED** located on the Ethernet jack is flashing it indicates data is being sent across the network.

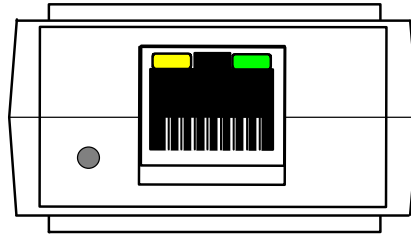


Figure 4. LED Indicators on the PES1A

## Reset Switch

The **Reset** switch is a recessed switch located on the RJ-45 end of the PES1A and on the side of the PESV1A. The Reset switch provides two functions:

Press and release within 10 seconds	Resets the PES1A/PESV1A
Press and hold for more than 10 seconds while powering up	Reloads factory default values

## Voltage Output Selector Switch (PESV1A only)

A three-position slide switch located on the side of the PESV1A allows you to select the voltage output (available on the two position terminal block). The three voltages available are:

- 5 VDC
- 9 VDC
- 12 VDC



## Ethernet Port Connector

The **Ethernet Port** connector is a standard RJ-45 receptacle that allows the serial server to be connected to an Ethernet network. It also carries Power over Ethernet (PoE) based on the IEEE 802.3af standard.

On the PES1A/ PESV1A two indicator LEDs are built into the RJ-45 connector.

## Serial Port Connector

The **Serial Port Connector** is a DB-9 male connector (configured as a DTE) supporting RS-232 serial communications including TD, RD, TRS, CTS, DTR, DCD, DSR and GND signal lines. Use a standard serial cable if connecting to a DCE; use a null modem (crossover) cable if connecting to a DTE.

*Refer to Appendices D, E and F for connection pin-outs.*

## Power Connector

Power is supplied to the PES1A/PESV1A by PoE (Power over Ethernet) via the RJ-45 Ethernet receptacle. Power over Ethernet may be delivered via unused pairs in the CAT-5 cable, or via a simplex power technique. Both options are supported by the PES1A and PESV1A. PoE power consumption for the PES1A and PESV1A are rated Class 3.

*Refer to Appendix E for Ethernet connection pin-outs and additional information on PoE.*

## Output Power Connector (PESV1A only)

The output power connector (on the PESV1A only) is a two position removable terminal block that provides a DC power supply voltage output (derived from the PoE input power) in three selectable ranges: 5 VDC, 9 VDC and 12 VDC. Maximum output power is 4 watts.

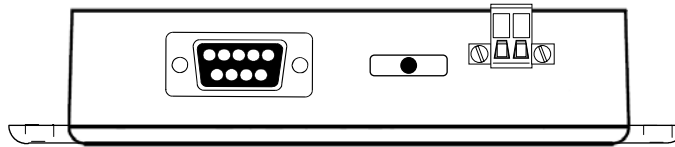


Figure 5. Side View of the PESV1A

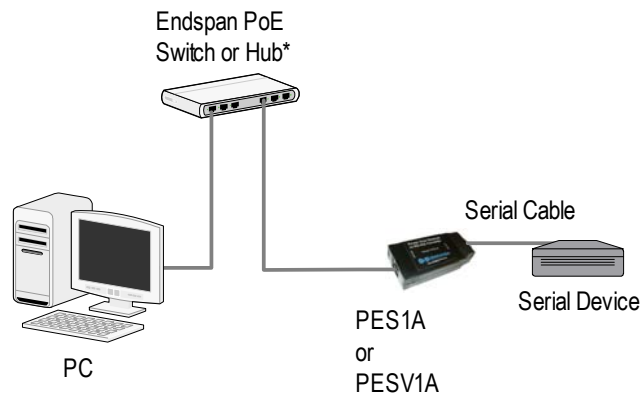
## Connecting the Hardware

Typically, the PES1A/PESV1A is connected to a network via a hub, switch or router using standard CAT-5 cable. Power must be supplied to the converter via the CAT-5 cable using Power over Ethernet. Configuration is accomplished over the network, or via a direct connection (see below) using the Web Configuration and Management Interface

### Power over Ethernet (PoE)

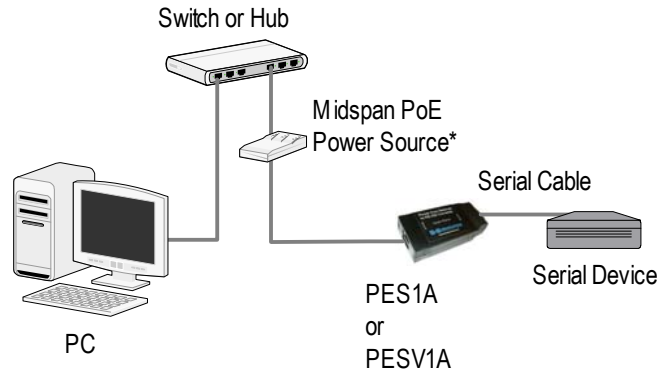
Power is supplied to your PES1A/PESV1A from PoE power source equipment (PSE), which must be installed within 100 meters of the converter. PSEs may be endspan or midspan devices. Endspan PSE devices may be switches or hubs with integrated PoE capability. Midspan PSE devices are dedicated, inline devices that are installed between your network switch and the PES1A/PESV1A.

*For more information on PoE see Appendix C.*



\* Must be within 100 ft of the PES1A/PESV1A

Figure 6. Connection using Endspan Power Source

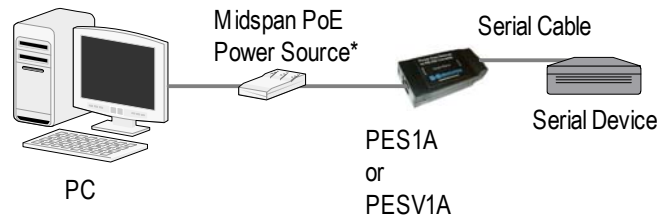


\* Must be within 100 ft of the PES1A/PESV1A

Figure 7. Connection using Midspan Power Source

## Configuration Connections

Your **PES1A/PESV1A converter** typically is configured over the network connection using standard browser software. It also could be connected directly to a PC network adapter. To do so an Ethernet crossover cable is required. Also, a midspan power source is required to provide power to the PES1A/PESV1A.



\* Must be within 100 ft of the PES1A/PESV1A

Figure 8. Direct Configuration Connection



---

## Chapter 3: Getting Started

---

### 1. Check the contents of your PES1A/PESV1A package. It should contain...

- The PES1A or PESV1A module
- A printed version of this user manual
- A printed version of the PES1A/PESV1A Quick Start Guide
- CD-ROM disc with discovery software, RealPort software, this manual, Quick Start guide

### 2. Set up the Hardware

- Connect your PC to the network
- Connect the PES1A/PESV1A serial port to your serial device (Use a serial cable if it is DCE, null modem cable if it is DTE.)
- Connect the PES1A/PESV1A Ethernet connector to a PoE-enabled network switch or hub (CAT-5 cable)

### 3. Power it Up

- Power is applied when the Ethernet (PoE) cable is connected
- When a connection is established with the network the yellow LED will illuminate
- The PES1A/PESV1A will automatically try to obtain an IP address, or generate one itself

### 4. Get the IP Address

- Use the discovery software on your CD (finder.exe) to get the IP address for your PES1A/PESV1A

### 5. Login

- In a web browser on your PC, type in the IP address and access the Web Configuration and Management Interface
- Login using the username 'root' and password 'dbps'

## **6. Configure the PES1A/PESV1A**

- In the Configuration, Serial Ports page select the Port Profile you require for use with your application (E.g. RealPort for virtual COM port, TCP Server, UDP server, Serial Bridge, etc)
- Configure the serial port settings for the selected Port Profile (E.g. In TCP Sockets select client or server, TCP port numbers, etc.) Also configure baud rate, data bits, etc in Basic Serial Settings.
- Configure any required alarms and notification
- If RealPort profile was selected (virtual COM port) do the next step (Set up VCOM)

## **7. Set up VCOM (if using the RealPort profile)**

- Start the RealPort software wizard (located on the included CD)
- Select Add a New Device
- Select your PES1A/PESV1A from the list
- Select an unused COM port number
- Follow the wizard to set up a virtual COM port

## **8. Communicate**

- Configure and then start your application

## Chapter 4: Configuring the IP Address

Before you can begin the configuration of your PES1A/PESV1A you must know its IP address to access it with a web browser. Once you have access to the Configuration and Management Interface via a web browser you can reset the IP address using static IP addressing, if necessary.

Your PES1A/PESV1A comes from the factory configured to obtain an IP address dynamically, or failing that, to generate its own IP address using the APIPA protocol. You can determine the current IP address using the discovery software included on the CD with your PES1A/PESV1A

### Using the Discovery Software

1. Connect the PES1A/PESV1A to your network (with PoE supply installed and operating). When it starts it will obtain an IP address.
2. To determine the initial IP address of your PES1A/PESV1A, start the *finder.exe* utility included on the included CD.

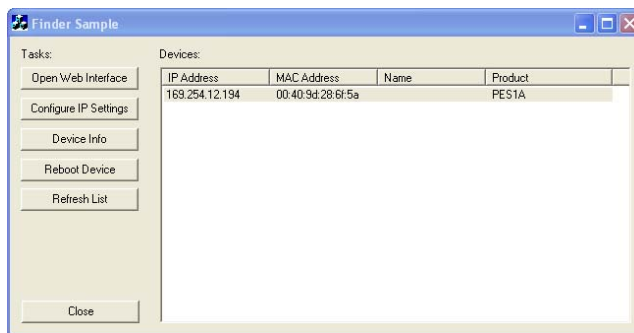


Figure 9. Discovery Utility Dialog

3. The finder.exe utility scans the network for devices and then lists each device's **IP Address**, **MAC Address**, **Name** and **Product ID**. Identify your PES1A/PESV1A by its MAC address (printed on a label on the PES1A/PESV1A).

If you need to change the IP address of the PES1A/PESV1A, you can accomplish this using the discovery software, or you can open the Web Configuration and Management Interface and do it there. (See Configuring Network Settings later in the next chapter.)

1. To change the IP address of the PES1A/PESV1A from the discovery software, click **Configure IP Settings**.
2. In the dialog that appears, select **Manually configure network settings**.
3. Type the new **IP Address**, **Subnet Mask**, **Default Gateway** and system password (initially *dbps*) in the appropriate boxes, then click **Apply**.
4. Click **Reboot Device**. This may take a minute or more to complete.
5. Click **Refresh List** to confirm the new IP address has been accepted.



---

## Chapter 5: Using the Web Configuration and Management Interface

---

The **PES1A/PESV1A Ethernet to RS-232 Converter** can be configured using the **Configuration and Management Interface** via a standard web browser such as Internet Explorer or Firefox.

### Logging In

1. Before you can begin configuring your PES1A/PESV1A Converter, you must login to the **Configuration and Management Interface**. To **login**, open your browser, type the IP address of your PES1A/PESV1A converter into the address bar and press **Enter**. The **Login** page will appear.
2. Enter your **Username** and **Password**, then click **Login**.

The first time you login, type the default (root) username and password.

- **Username: root**
- **Password: dbps**

*The default username and password are preconfigured to give you full administrator permissions, allowing you to add and configure permissions for additional users. For security purposes, you may want to change the username and password after you have access the interface for the first time. To change usernames and passwords, and to add and configure new users, see [Managing Users and Permissions](#) in Chapter 6.*

When the username and password are accepted the **Configuration and Management Interface** homepage will appear.

### Logging Out

To log out of the Web Configuration and Management Interface, click **Logout** on the menu bar. To finish logging out of the web server, and prevent access by other users, you also must close the browser.

## Using Tutorial and Help

You can access the PES1A Tutorial by clicking **Tutorial** on the Configuration and Management homepage. Clicking **Help** on any page of the Configuration and Management Interface opens topics specific to that page.

*After logging in, if there is no activity for a period of time your session may time out. Clicking on any link will return you to the Web Login page where you will have to log in again to continue your session.*

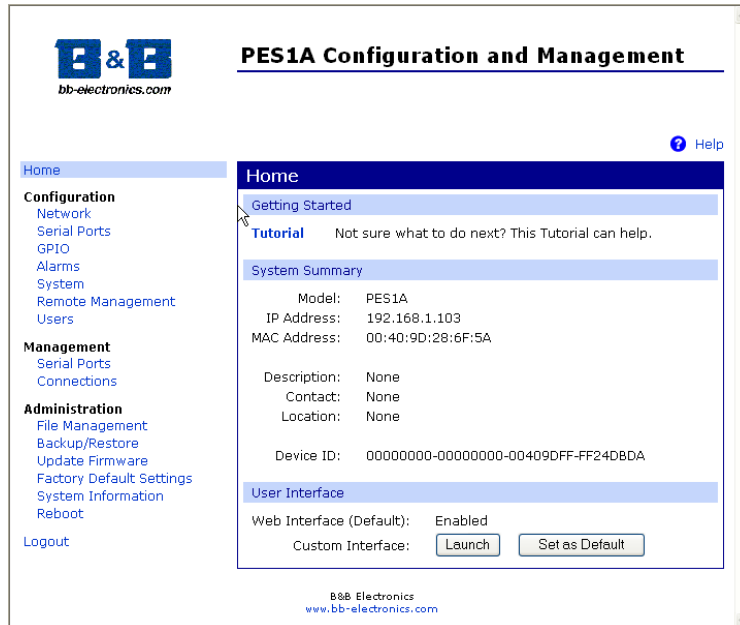


Figure 10. The PES1A/PESV1A Configuration and Management Homepage

## Configuring Network Settings

The **Network Configuration** page contains three sections with hyperlinked menu bars. Click **IP Settings**, **Network Services Settings** or **Advanced Network Settings** to access these areas.

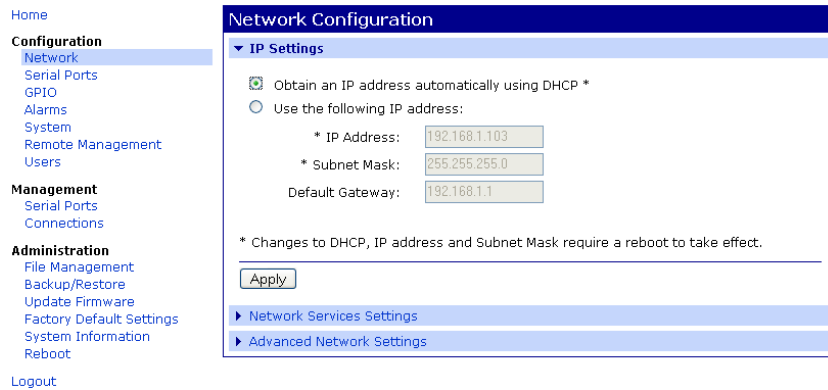


Figure 11. Network, IP Settings Page

## IP Settings

The **IP Settings** section allows you to select between dynamic or static IP addressing. The PES1A/PESV1A's default setting is **Obtain an IP address automatically using DHCP**, or dynamic IP addressing.

*When the PES1A/PESV1A is first connected it will try to obtain an IP address automatically. If it fails, it will assign an IP address to itself using the **Automatic Private IP Addressing (APIPA)** protocol. You can re-configure the PES1A/PESV1A for static IP address by selecting **Use the following IP address** and assign the IP address yourself.*

If **Use the following IP address:** is selected, you are choosing static IP addressing. When this option is selected the **IP Address**, **Subnet Mask** and **Default Gateway** text boxes become available. You must determine the appropriate parameters and enter them yourself. (If you do not know what to enter ask your network administrator for assistance.)

To implement any changes in this section, click **Apply**. A page will appear asking you to **Reboot** the PES1A/PESV1A so that the changes can take effect.

## Network Services Settings

The **Network Services Settings** section allows you to enable or disable several common network services and configure their associated ports. Typically you will not have to change these settings.

## Advanced Network Settings

The **Advanced Network Settings** section allows you to fine-tune the network connection. Typically these setting will not need to be changed.

*Consult the web-based tutorial and/or your network administrator for more information on Network Services and Advanced Network settings.*

## Configuring the Serial Port

The **Serial Port Configuration** page displays information about the serial port on your PES1A/PESV1A, including its description, its profile (operating mode) and serial settings (baud rate, data bits, parity, stop bits). You will have to configure these parameters to set up your system for the type of operation required and to match the parameters of the serial device to which the PES1A/PESV1A is connected.

To open the **Serial Port Configuration** page, under the **Configuration** menu click **Serial Ports**. When you first access this page a list of ports, their description, profile and serial configuration appears. (If the PES1A/PESV1A has not yet been configured for the first time the Profile column may indicate <Unassigned>.)

To access detailed settings for the PES1A/PESV1A serial port, click **Port 1**. The **Serial Port Configuration** page that appears includes three sections with hyperlinked menu bars.

- **Port Profile Settings**
- **Basic Serial Settings**
- **Advanced Serial Settings**

### Port Profile Settings

The **Port Profile Settings** section displays the current serial port mode of operation, a description of that profile and a hyperlink to **Change Profile...**

Click the **Change Profile...** menu bar to open the **Select Port Profile** page. Any of eight possible serial port profiles can be selected.

Figure 12. Select Port Profile Page

## RealPort

Select **RealPort** to implement the use of virtual COM ports. This allows you to map a COM port on a PC to the serial port on your PES1A/PESV1A. Using RealPort software (included with the PES1A/PESV1A) you create a virtual COM port on the PC. When your application sends data to this port, RealPort redirects the data across the network to the PES1A/PESV1A. The PES1A/PESV1A passes the data to the serial device connected to its serial port. The network is transparent to the user application and the serial device connected to the PES1A/PESV1A.

*For information on how to use RealPort to create virtual COM ports on your PC see Chapter 8*

## Console Management

In **Console Management** the PES1A/PESV1A can be configured for connection to the management port typically found on network devices such as routers, switches and servers. This allows remote management of the network device. Communication can be accomplished using telnet to a specific port in the converter.

## TCP Sockets

Select **TCP Sockets** to implement **Direct IP Mode** using **TCP**. When using TCP Sockets your converter can be configured as a **TCP server** or **TCP client**.

### TCP Server Settings

If your PES1A/PESV1A is configured as a TCP server, other network devices can initiate a TCP connection with the serial device connected to the PES1A/PESV1A serial port. (This is also referred to as *reverse telnet*.) Network devices initiating connections must be configured with the IP address of the PES1A/PESV1A and the TCP port number associated with its serial port.

After selecting **TCP Sockets**, click **Apply** to return to the **Serial Port Configuration** page. Select the **TCP Server Settings** as required by your application.

The screenshot shows the 'Serial Port Configuration' web interface. Under 'Port Profile Settings', the current profile is 'TCP Sockets'. Below this, the 'TCP Server Settings' section is active, showing instructions to connect directly to the serial device using TCP ports. Three options are listed, each with a checked checkbox and a text input field for the port number:

- Enable Telnet access using TCP Port:   Enable TCP Keep-Alive
- Enable Raw TCP access using TCP Port:   Enable TCP Keep-Alive
- Enable Secure Socket access using TCP Port:   Enable TCP Keep-Alive

Figure 13. TCP Server Settings

For each option, the TCP port number is shown. You can also **Enable TCP Keep Alive** for each selection. (If **Enable Keep Alive** is selected the connections is maintained even if no data is being sent.)

### TCP Client Settings

If your PES1A/PESV1A is configured as a TCP client it will automatically establish a bi-directional TCP connection between the serial device and a server or other networked device. Selecting **Automatically establish TCP connections** enables this feature and its configuration options become available.

## TCP Client Settings

Automatically establish bi-directional TCP connections between the serial device and a server or other networked device.

Automatically establish TCP connections  
Establish connection under one of the following conditions:

- Always connect and maintain connection
- Connect when data is present on the serial line  
Match string:
- Strip string before sending
- Connect when DCD (Data Carrier Detect) line goes high
- Connect when DSR (Data Set Ready) line goes high

Establish connection to the following network service:

IP Address:

Service:

TCP Port:

Enable TCP Keep-Alive

Figure 14. TCP Client Settings

Consult the Tutorial and online Help for more detail.

## UDP Sockets

Select **UDP Sockets** to implement **Direct IP Mode** using **UDP** protocol. When using UDP Sockets your converter can be configured as a **UDP server** or **UDP client**.

### UDP Server Settings

If your PES1A/PESV1A is configured as a UDP server, other network devices can initiate a UDP connection with the serial device connected to the PES1A/PESV1A serial port. Network devices initiating connections must be configured with the IP address of the PES1A/PESV1A and the UDP port number associated with its serial port.

After selecting **UDP Sockets**, click **Apply** to return to the **Serial Port Configuration** page. Select the **TCP Server Settings** as required by your application.

**Serial Port Configuration**

**Port Profile Settings**

Current Port Profile: **UDP Sockets** [Change Profile...](#)  
 The UDP Sockets Profile allows a serial device to communicate using UDP.

**UDP Server Settings**

The serial device receives data from one or more devices or systems on the network using UDP sockets.

Enable UDP access using UDP Port:

Figure 15. UDP Server Settings

### UDP Client Settings

If your PES1A/PESV1A is configured as a UDP client you can automatically distribute serial data from you PES1A/PESV1A to many devices at the same time. This is sometimes referred to as *Data Distribution* or *UDP Multicast*.

**UDP Client Settings**

Automatically send serial data to one or more devices or systems on the network using UDP sockets.

Automatically send serial data  
 Send data to the following network services:

Description	Send To	UDP Port
No destinations currently configured		
<input type="text"/>	<input type="text" value="0.0.0.0"/>	<input type="text" value="0"/>
<input type="button" value="Add"/>		

Send data under any of the following conditions:

Send when data is present on the serial line  
 Match string:   
 Strip string before sending

Send after following number of idle milliseconds  
 ms

Send after the following number of bytes  
 bytes

Figure 16. UDP Client Settings

You can configure multiple destinations. In the appropriate boxes, type the **Description**, **Send To** IP address or DNS name and **UDP Port** number, then click **Add**. You can also configure the conditions under which to send data.

*Consult the Tutorial and online Help for more detail.*



## ***Serial Bridge***

Select **Serial Bridge** to implement Paired Mode (also called serial tunneling). This allows serial devices connected to two PES1A/PESV1A converters to communicate across the network. The two PES1A/PESV1A converters automatically connect to each other.

## ***Terminal***

Select **Terminal** to communicate with the PES1A/PESV1A via its serial port using a terminal program and a command line interface. For more information on this option and the command line interface contact B&B Electronics Technical Support.

## ***Modem Emulation***

Select **Modem Emulation** to configure the serial port to operate as if it is a modem. For legacy applications where a serial device is set up to communicate through a modem, the serial device can be connected to the PES1A/PESV1A and communication occurs over the network. The PES1A/PESV1A emulates modem responses to and from the serial device.

## ***Custom***

Select **Custom** to custom configure the PES1A/PESV1A serial port and is used if your application does not fit into any other predefined modes. This is an advanced option that allows full configuration of the serial port.

## ***Apply***

After you have selected a port profile, click the **Apply** button. The **Serial Port Configuration** page will re-appear and will contain additional configuration settings specific to the profile you have chosen.

*For more information on these configuration options see the web-based Tutorial and online Help.*

## ***Basic Serial Settings***

Click the **Basic Serial Settings** menu bar on the **Serial Port Configuration** page to configure the PES1A/PESV1A's serial port **Baud Rate**, **Data Bits**, **Parity**, **Stop Bits** and **Flow Control** parameters. For all profiles except RealPort, the Basic Serial Settings configuration section allows you to set these parameters. When the RealPort profile is selected the serial port settings will be directed by the PC applications using the virtual COM port.

## Advanced Serial Settings

Click the **Advanced Serial Settings** menu bar to access settings used to fine tune the serial port. Typically these setting will not need to be changed. Consult the web-based tutorial for more information if necessary.

## Configuring Alarms and Notification

The PES1A/PESV1A can be configured to generate alarms and send notification emails based on the occurrence of specific events. Events include the states of some RS-232 handshake (GPIO) lines and the detection of specified character patterns within the serial data stream. The **Alarms Configuration** page displays the current alarm settings and allows you to configure them. It contains two sections: **Alarm Notification Settings** and **Alarm Conditions**.

*Note: In the PES1A/PESV1A GPIO lines are permanently configured as RS-232 hardware handshake lines to support the standard RS-232 interface. Do not attempt to re-configure the settings in the GPIO section of the Web Configuration and Management Interface.*

### Alarm Notification Settings

The **Alarm Notification Settings** page provides a checkbox to enable alarm notifications. Text boxes are provided to enter the IP address of your SMTP mail server and the email address that will be placed in the **From** field of the email.

### Alarm Conditions

The **Alarm Conditions** page is a tabular listing of 32 alarms that can be configured. Table headings include **Enable** (a checkbox), **Alarm name/number**, **Type** of alarm, **Trigger** conditions, **SNMP Trap**, **Send to** address and **Email Subject** line.

Clicking on the Alarm name opens an **Alarm Configuration** page for that specific alarm. The page contains two sections: **Alarm Conditions** and **Alarm Destinations**.

**Alarm Conditions** allows you to select GPIO-based or serial data pattern-based events.

*GPIO is not supported in the PES1A/PESV1A but it is possible to use the **Send alarms based on GPIO pin states** feature to generate alarms based on the condition of some RS-232 hardware handshake lines. For assistance in implementing this feature contact B&B Electronics Technical Support at 815 433-511 or support@bb-elec.com*

To **Send alarms based on serial data pattern matching**, select that option and type a character string into the text box provided.

### **Alarm Destinations**

**Alarm Destinations** allows you to specify where to send alarm notification emails, their priority and subject title. Type the information into the **Mail to** email address, **CC** address, set the **Priority** and type in the **Subject** line.

To send an SNMP trap, select **Send SNMP trap to following destination when alarm occurs** and type the destination IP address for the SNMP trap.



---

## Chapter 6: Managing the PES1A/PESV1A

---

### System Settings

The **System** configuration page contains two sections: the **Device Identity Settings** and the **Simple Network Management Protocol (SNMP) Settings**.

#### **Device Identity Settings**

The **Device Identity Settings** page allows you to enter a **Description** such as the network name of the PES1A/PESV1A, the **SNMP Contact** person, a text description of the **Location** of the PES1A/PESV1A and the **Device ID** number.

#### **Simple Network Management Protocol (SNMP) Settings**

The **SNMP Settings** page allows you to enable and configure **SNMP** and **SNMP traps**.

*For more information on using **SNMP** access the **Tutorial** and **Help** files and request assistance from your network administrator.*

---

### Using Remote Management

The PES1A/PESV1A can be remotely managed using the **Connectware Manager**, a server installed on a separate computer. There are three sections to the **Remote Management Configuration** page: **Connections**, **Security** and **Advanced** settings.

*For more information on **Remote Management Configuration** click the **Connectware Manager Tutorial** link.*

---

### Managing Users and Permissions

The **Users** configuration page allows you to add, remove and edit **Users** information including passwords, access privileges and user permissions.

## **Changing the Root Username and Password**

You may want to change the Root username and password after you have gained access to the Web Configuration and Management Interface. To change your username and password click **Users** under the **Configuration** menu. Follow the prompts to enter a new username and password. Click **Apply** to complete the procedure.

## **Adding New Users**

The root user of the PES1A/PESV1A (using the default username and password) has complete administrative rights, including access and control of all configuration parameters. As administrator you can add other users and configure the specific rights of each.

Non-administrators can also set up new users, access and permissions (if they have permission) but a user cannot set another user's permission level higher than their own permission level, nor can a user raise their own permission level.

1. In the **Configuration** menu, click **Users**. The **User Configuration** page appears.
2. Click **New**. The **Add New User** page appears.
3. Type a new username in the **New Username** box.
4. Type a new password in the **New Password** box. The characters you type will be masked by asterisks.
5. Type the new password again in the **Confirm Password** box. The characters you type will be masked by asterisks.
6. Click **Apply**. After a short delay a message box appears at the top of the page announcing, "**Changes have been saved successfully.**"

## **Configuring User Access and Permissions**

1. In the Configuration menu, click **Users**. The **User Configuration** page appears.
2. Click the username to be configured. The **User Configuration – Username** page appears. To change the username or password, make the changes under **User Configuration** and click **Apply**.

3. Click the **User Access** link. The User Access page opens. Select **Allow command line access** and/or **Web Interface Access**. Click **Apply**. (See the online help for more information on these choices.)
4. Click the **User Permissions** link. The **User Permissions** page appears containing a list of permissions and dropdown lists. For each item on the list select the level of permission to be granted to the user. (See the online help for more information on these choices.)

## Managing Serial Ports and Connections

The Management section of the Web Configuration and Management Interface provides information about the current operational state of the PES1A/PESV1A.

### **Serial Ports**

The **Serial Port Management** page displays information on: **Port** number, **Description**, **Profile** and **Connections**. If you click **Connections** the Port Connections Management page appears displaying information on where the port is **Connected From**, **Connected To**, the **Protocol** (or profile) being used and the number of **Sessions**. This information can be **Refreshed** and, if the **Action** box is selected the **Disconnect** button become available allowing you to disconnect.

### **Connections**

The **Connections Management** page displays network connections information including **Connected From**, **Connected To**, the **Protocol** in use and the number of **Sessions**.





---

## Chapter 7: Using Administrative Features

---

For additional information on each of the following features access the Tutorial and Help files.

### File Management

The **File Management** page provides facilities to upload and/or manage custom web pages and files such as your applet and HTML files to the PES1A/PESV1A. Uploading an index.htm or index.html file will automatically load that page upon logging into the PES1A/PESV1A.

### Backup/Restore

The **Backup/Restore** page allows you to backup the current configuration settings on your PES1A/PESV1A to a folder on your PC. You can also restore the configuration from a saved file.

### Update Firmware

The Update Firmware page allows you to select firmware from a folder on your computer and upload it to the PES1A/PESV1A.

*Caution: When updating the firmware, check the support site and release notes for more information to determine if the PES1A/PESV1A must update the POST before updating the firmware.*

### Factory Default Settings

The Factory Default Settings page allows you to reset the PES1A/PESV1A to factory defaults (see Appendix A) with the option of keeping network settings as they are.

*Caution: Restoring the factory default settings will clear all current settings and automatically reboot the PES1A/PESV1A.*

## System Information

The **System Information** page displays information about your PES1A/PESV1A:

### **General**

- Model
- MAC Address
- Firmware Version
- Boot Version
- POST Version
- CPU Utilization
- Up Time
- Total Memory
- Used Memory
- Free Memory

### **GPIO**

Not applicable to the PES1A/PESV1A

### **Serial**

The **Serial** page displays a table containing the following information:

- Port number
- Description
- Profile
- Serial Configuration (baud rate, data bits, parity, stop bits)

If you click Port 1 the **Serial Port Diagnostics** page appears:

**Serial Port Diagnostics** [Return to System Information](#)

**Configuration**

Profile: RealPort  
 Baud Rate: 2400 bps  
 Data Bits: 8  
 Parity: None  
 Stop Bits: 1  
 Flow Control: Software  
 Port Type: RS-232

**Signals**

RTS CTS DTR DSR DCD IFC OFC

**Serial Statistics**

Total Data In:	12 bytes	Total Data Out:	91 bytes
Overrun Errors:	0	Overflow Errors:	0
Framing Errors:	0	Parity Errors:	0
Breaks:	0		

Figure 17. Serial Port Diagnostics Page

## Network

The Network page displays statistics related to IP, TCP, UDP and ICMP protocol activities.

**System Information**

- General
- GPIO
- Serial
- Network**

The following information and statistics can be used to manage and monitor your network connections and interfaces. This information may also be helpful in troubleshooting problems with the network.

**IP Statistics**

Datagrams Received:	14651	Datagrams Forwarded:	0
Forwarding:	0	No Routes:	0
Routing Discards:	0	Default Time-To-Live:	60

**TCP Statistics**

Segments Received:	13628	Segments Sent:	13572
Active Opens:	1	Passive Opens:	113
Bad Segments Received:	0	Attempt Fails:	0
Segments Retransmitted:	8	Established Resets:	6
Currently Established:	4	Resets Sent:	1

**UDP Statistics**

Datagrams Received:	1014	Datagrams Sent:	15
Bad Datagrams Received:	0	No Ports:	990

**ICMP Statistics**

Messages Received:	10	Bad Messages Received:	0
Dest. Unreachable Messages Received:	0	Messages Sent:	8
Dest. Unreachable Messages Sent:	0		

Figure 18. Network Information Page

## Reboot

The **Reboot** page allows you to reboot the PES1A/PESV1A. If you click on **Reboot** the process will take approximately one minute to complete.

---

## Chapter 8: Using RealPort

---

**RealPort** is a COM port redirector program that allows you to add and remove virtual COM ports on your PC and update the RealPort software.

Virtual COM ports allow you to set up a connection between your PC and the device connected to the serial port on your PES1A/PESV1A via an Ethernet network connection using TCP/IP. If you will be using virtual COM ports (configuring your serial port with the RealPort profile) you must use RealPort to configure those ports on your PC. Once you have configured a new virtual COM (VCOM) port using RealPort, application software can communicate through that COM port as if it is located within the PC.

There are three steps to setting up a virtual COM port with RealPort.

1. Configure the PES1A/PESV1A with an IP address
2. Configure the PES1A/PESV1A serial port for RealPort (VCOM) mode
3. Configure the port itself using RealPort

### **Configuring the IP Address**

See **Chapter 3, Configuring the IP Address**

### **Configuring the Serial Port for RealPort**

1. Login to the Web Configuration and Management Interface.
2. Select **Configuration, Serial Port**.
3. On the **Serial Port Configuration** page, check the **Profile** for the port. If it is not **RealPort**, click **Port 1**.
4. On the page that appears click **Change Profile**.
5. On the **Select Port Profile** page, select **RealPort**, then click **Apply**.

## ***Adding a Virtual COM Port using RealPort***

Windows 2000/XP/Vista:

1. Locate the RealPort driver software on the CD you received with your PES1A/PESV1A.
2. Find the RealPort setup.exe file for your PC's operating system.
3. Start the **setup.exe** file. The **RealPort Setup Wizard Welcome** dialog appears.
4. Select the **Add a New Device**, then click **Next**. The **Select Device** dialog appears listing the **IP Address**, **MAC Address** and **Model** of all devices on the network. To identify your PES1A/PESV1A compare the MAC address listed with the MAC address on the label on your PES1A/PESV1A.
5. Select the device to be configured as a virtual COM port and click **Next**.
6. In the **Select COM Port** dialog that appears, select the COM port number to be assigned to the PES1A/PESV1A. Click **Next**. A progress screen will appear.
7. When the process is complete click **Finish**.

Windows 98, ME, NT 4.0:

1. Follow the readme.txt included with each O/S on the CD (no setup.exe available).

## ***Removing a Virtual COM Port using RealPort***

Windows 2000/XP/Vista:

1. Locate the RealPort driver software on the CD you received with your PES1A/PESV1A.
2. Find the RealPort setup.exe file for your operating system.
3. Start the **setup.exe** file. The **RealPort Setup Wizard Welcome** dialog appears.

4. Select the **Remove an Existing Device**, then click **Next**. The **Select Device to Remove** dialog appears listing the **IP Address**, **MAC Address** and **Model** of all devices on the network. To identify your PES1A/PESV1A compare the MAC address listed with the MAC address on the label on your PES1A/PESV1A.
5. Select the device to be removed and click **Next**.
6. In the **Select COM Port** dialog that appears, select the COM port number to be assigned to the PES1A/PESV1A. Click **Next**. A progress screen will appear.
7. When the process is complete click **Finish**.

Windows 98, ME, NT 4.0:

1. Follow the readme.txt included with each O/S on the CD (no setup.exe available).

### **Updating RealPort**

Windows 2000/XP/Vista:

1. Locate the RealPort driver software on the CD you received with your PES1A/PESV1A.
2. Find the RealPort setup.exe file for your operating system.
3. Start the **setup.exe** file. The **RealPort Setup Wizard Welcome** dialog appears.
4. Select the **Update RealPort Software**, then click **Next**.
5. A progress dialog will appear.
6. When the process is complete a dialog will indicate that you must restart your computer before the new settings will take effect. Click **Yes** to restart your computer now.

Windows 98, ME, NT 4.0:

1. Follow the readme.txt included with each O/S on the CD (no setup.exe available).





---

## **Appendix A: Default Configuration Settings**

---

Server Name	PES1A, PESV1A
Username:	root
Password:	dbps
DHCP:	Enabled
Baud Rate:	9600
Data//Stop:	8/1
Parity:	None
Flow Control:	None
TCP/UDP Protocol:	TCP
Connection Mode:	TCP Socket
TCP/UDP port:	2001



## Appendix B: Product Specifications

Model:	PES1A, PESV1A
Manual:	Paper copy of this manual, PDF available
CD-ROM disc:	RealPort virtual COM port software for Windows 98/ME/2000/XP/NT 4.0/ Vista B&B discovery software (finder.exe) PDF of PES1A/PESV1A User Manual PDF of Quick Start guide
Operating Systems supported	Windows 98/ME/2000/XP/NT 4.0/Vista (call B&B Tech Support for other operating systems)
Dimensions	PES1A – 0.8 x 1.7 x 3.9 in (2.0 x 4.2 x 9.8 cm) PESV1A – 1.0 x 2.8 x 5.1 inches (2.5 x 7.1 x 13.0 cm)
Power Supply Requirements:	Class 3 Power over Ethernet (PoE)
Power Consumption:	Class 3 device for PoE configuration
Power Output (PESV1A only):	5, 9, or 12VDC @ 4W maximum, slide switch selectable Connector is pluggable two position terminal block 125mA max in rush
Operating Temperature:	0 to 70 °C (32 to 158 °F)
Storage Temperature:	-40 to 85 °C (-40 to 185 °F)
Humidity:	10% to 90% R.H. non-condensing
Approvals:	CE, FCC, class B
Link Integrity Indicator:	Yellow LED (on Ethernet connector)
Activity Indicator:	Green LED (on Ethernet connector)
Ethernet Connector:	Single RJ-45 female (with built-in LED indicators)
Ethernet Standards Supported:	IEEE 802.3 10/100 Mbps auto-detecting, 10BaseT, 100BaseTX IEEE 802.3af Power over Ethernet, compatibility for both data and spare pair lines
Protocols Supported:	TCP, UDP, DHCP, SNMP, SSL/TLS, TELNET, RLOGIN, RFC 2217, LPD, HTTP/HTTPS, SMTP, ICMP, IGMP, ARP
Serial Connector:	9 pin D-type male (DB-9M)
RS-232 Interface Lines Supported:	TD, RD, RTS, CTS, DTR, DSR, DCD, DSR, GND
Serial Data Rates:	50, 75, 110, 134, 150, 200, 300, 600, 1200, 1800, 2400, 4800, 9600, 14400, 19200, 28800, 38400, 57600, 115200, 230400 bps
Parity:	None, Even, Odd, Mark, Space

*Product Specifications*

<b>Data Bits:</b>	5, 6, 7 or 8
<b>Stop Bits:</b>	1, 2
<b>Flow control:</b>	None, Hardware, Software
<b>Set-up Options:</b>	Web Configuration and Management Interface
<b>Configuration Modes:</b>	Direct IP (TCP or UDP Sockets) Virtual COM Port (RealPort) Paired Mode (serial bridge/serial tunneling) Terminal Modem Emulation Custom
<b>Configuration Method:</b>	Uses any web browser via built-in web server Customizable web interface option with support for Java applets
<b>Security:</b>	Admin configuration password protection Strong SSL v3.0 / TLS v1.0 based encryption – DES (56 bit), 3DES (168 bit), AES (128/256 bit)
<b>Device Management:</b>	SNMP – RFC 1213/1215/1316/131
<b>IP Address Assignment:</b>	Static IP, DHCP, Auto-IP
<b>TCP/UDP Forwarding Characteristics:</b>	Bytes, Idle Time, Data Pattern
<b>Event Notification:</b>	Via email with SNMP traps triggered by matching data pattern
<b>Accessories:</b>	Panel mount bracket

## Appendix C: Dimensional Diagrams

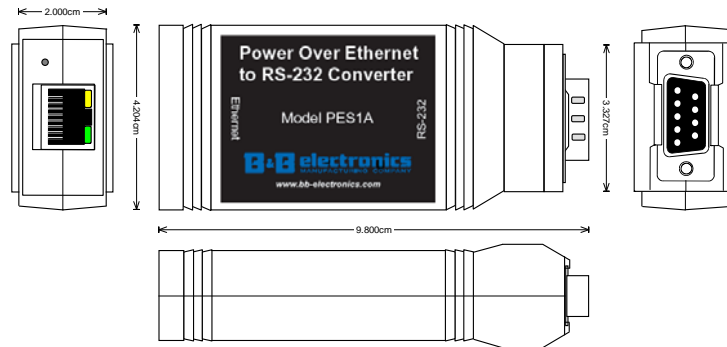


Figure 19. Dimensional Diagram of the PES1A

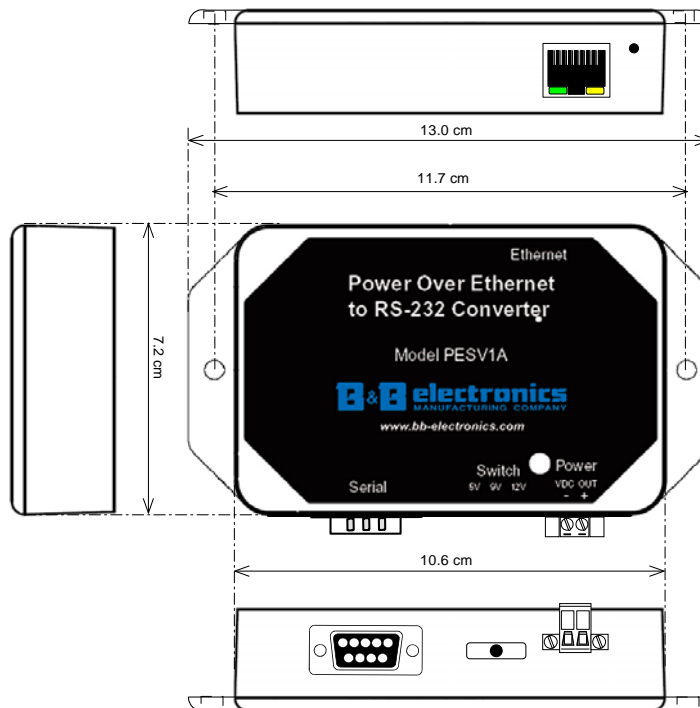
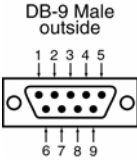


Figure 20. Dimensional Diagram of the PESV1A



## Appendix D: RS-232 Connections



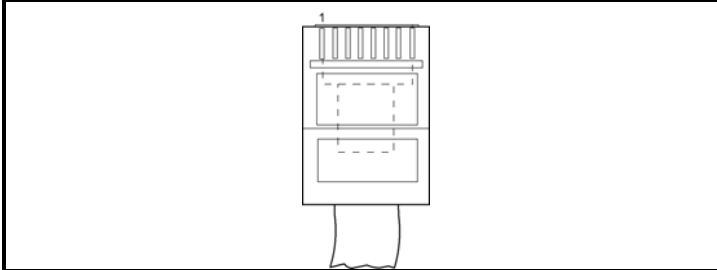
DB-9M Pin	Signal	RS-232	DTE
1	Carrier Detect	DCD	In
2	Receive Data	RXD	In
3	Transmit Data	TXD	Out
4	Data Terminal Ready	DTR	Out
5	Signal Ground	GND	---
6	Data Set Ready	DSR	In
7	Request To Send	RTS	Out
8	Clear To Send	CTS	In
9	Not Connected	NA	NA

Figure 21. RS-232 Connections in a DB-9 Connector





## Appendix E: Network Connections



RJ-45 Pin	Signal	Wire Color	PoE Alternative A	PoE Alternative B
1	TX+	White-Green	Negative	
2	TX+	Green	Negative	
3	RX+	White-Orange	Positive	
4	Not used	Blue		Positive
5	Not used	White-Blue		Positive
6	RX-	Orange	Positive	
7	Not used	White-Brown		Negative
8	Not used	Brown		Negative

Figure 22. Pin-out for an Ethernet Cable showing PoE



## Appendix F: Power over Ethernet (PoE)

Power over Ethernet is a technique (defined by the IEEE802.3af standard) for providing power to Ethernet enabled devices over standard Category 5e cabling. Two techniques (Alternative A and Alternative B) are defined by the standard and supported by the PES1A/PESV1A.

Alternative A implements a simplex, or 'phantom feeding' method for delivering power to the end device. Power is carried on the same conductors as data. Cabling for standard 10BaseT and 100BaseTX Ethernet (typically Category 5 cable with RJ-45 connectors) uses two data/signal pairs. The power sourcing equipment (PSE) applies positive DC voltage (simplex) to pins 3 and 6. Negative voltage is applied to pins 1 and 2. The powered device (PD) derives the power from these lines.

Alternative B carries power over spare wire pairs in the cable. The power sourcing equipment applies positive voltage to pins 4 and 5. Negative voltage is applied to pins 7 and 8.

Operating voltage is typically 48 volts but may vary from 44 volts to 57 volts.

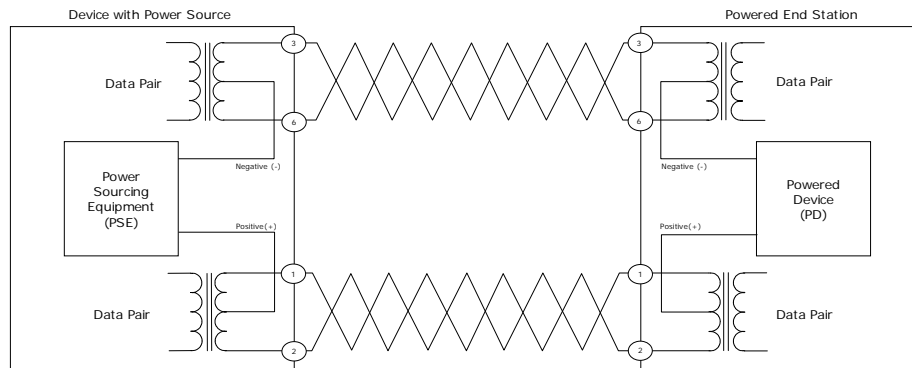


Figure 23. Power over Ethernet Alternative A

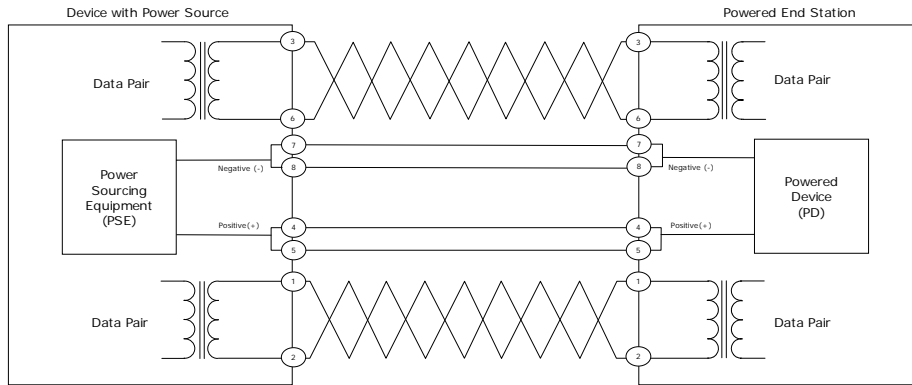



Figure 24. Power over Ethernet Alternative B

<b>DECLARATION OF CONFORMITY</b>	
Manufacturer's Name:	B&B Electronics Manufacturing Company
Manufacturer's Address:	P.O. Box 1040 707Dayton Road Ottawa, IL 61350 USA
Model Numbers:	PES1A, PESV1A
Description:	Mini POE Ethernet to RS-232 Converters
Type:	Light industrial ITE equipment
Application of Council Directive:	89/336-EEC
Standards:	EN 55022 EN 61000-6-1 EN 61000 (-4-2, -4-3, -4-4, -4-5, -4-6, -4-8, -4-11)
 Michael J. Fahrion, Director of Engineering	
